

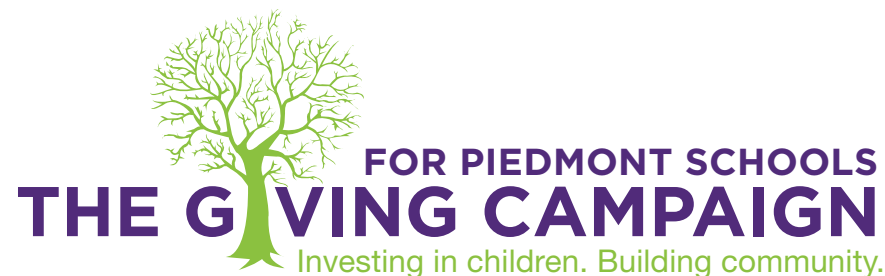
PHS CLASS OF 2009 DONATES \$25,000 TO THE ENDOWMENT FUND:

The families of the PHS Class of 2009 have donated \$25,000 to the Piedmont Educational Foundation's Endowment Fund in honor of their graduates. This gift is a fitting legacy and tribute for the many years of high quality education that these students have received in Piedmont. Over the past eight years, graduating classes have donated almost \$210,000 to the Endowment Fund as a parting gift.

Konrad Alt & Maureen Kennedy *in honor of* Wyatt Alt
Keith & Jane Anderson *in honor of* Robert Anderson
Helen Armbrust & Len Mentzer *in honor of* Clare Armbrust
John & Lili Bassett *in honor of* Jack Bassett
Simon & Briony Bax *in honor of* Charlotte Bax
The Becker *in honor of* Marki Becker
Helle Vistisen & David Berger *in honor of* Katarina Berger
Andrew & Karen Berna-Hicks *in honor of* Giuliano Berna-Hicks
David Borgen & Sharon Moy *in honor of* Allison Moy-Borgon
Clifton Bowen & Naomi Feger *in honor of* Suzy Bowen
Jon & Robin Braslaw *in honor of* Truman Braslaw
Jim & Jennifer Cardoza *in honor of* Samuel Cardoza
Scott Cauchois & Karen Notsund *in honor of* Camille Cauchois
Robin & Richard Chetkowski *in honor of* Alex Chetkowski
Shawn Conway & Cynthia Nakashima *in honor of* Madeline Nakashima-Conway
Jody Cornelius *in honor of* Tommy Cornelius
Grant Crossen & Melissa Wenters *in honor of* Cole Crossen
Margie Dere *in honor of* Amy Lucas
Dave & Nancy DeRoche *in honor of* Derek DeRoche
Christine Dobbie *in honor of* Alex Steady
Chris & MJ Dodds *in honor of* William Dodds
Sam Dong & Ann Schertz-Dong *in honor of* Allison Dong
Carter & Patty Dunlap *in honor of* Trevor Fleshman
Carter & Patty Dunlap *in honor of* Jonathan Vinberg
David & Ellen Fineman *in honor of* Emma Fineman
Mary Finley *in honor of* Trevor Fleshman
Brandon & Dana Fleshman *in honor of* Trevor Fleshman
Donna Fone & Erik Frederiksen *in honor of* Evan Yee
Lance Fong & Sharon Hom *in honor of* Bryan Fong
Bianca & Glenn Forrester *in honor of* Sydney Forrester
Muriel & Clyde Fox *in honor of* Katarina Berger
John H. Fullerton *in honor of* Anastasia Fullerton
Dave & Pam Fullerton *in honor of* Anastasia Fullerton
Don & Kuniko George *in honor of* Jeremy George
Tom Glenn & Indira Balkissoon *in honor of* Isabel Glenn
Rick & Jan Grossman *in honor of* Max Grossman
John Gutierrez *in honor of* Lia Gutierrez
Arden Hall & Cynthia Kroll *in honor of* Owen Hall
Victor & Muriel Hebert *in honor of* Sydney Prichard
Bill & Annie Holland *in honor of* Joseph Holland
Steve & Janna Hollis *in honor of* Toby Hollis
Donald Howe & Wendy Cilman-Howe *in honor of* Brendan Howe
Doug & Mary Ireland *in honor of* Haley Ireland
Jeffrey Jones & Dagmar Fung *in honor of* Nathaniel and Zachary Jones

Quinn Delaney & Wayne Jordan *in honor of* Sam Jordan
Larry & Debbie Kelley *in honor of* Brendan Kelley
Kim & Bob Lally *in honor of* Kelsey Lally
Nick & Ginny Lammers *in honor of* Madeline Lammers
Blake & CeCe Lasky *in honor of* Kevin Lasky
Susan M. Lauren *in honor of* Mitchell Manburg
Rei-Chi Lee & Amy Chen *in honor of* Eugenia Lee
Michael & Lisa Lee *in honor of* Milton Lee
Randy & Rebecca Litteneker *in honor of* Alan Litteneker
Doug & Jeri Lockhart *in honor of* Ainsley Lockhart
Wilbur & Charlene Louie *in honor of* LeeAnn Louie
Ms. May Thomas & Dr. Thomas J. Mampalam *in honor of* T.J. Thomas
Ed Manburg *in honor of* Mitchell Manburg
Larry Matarazzi & Natalie Mallinckrodt *in honor of* Kelly Matarazzi
Susan McGreevy *in honor of* Jacob Cohn
McKean & McMills LP *in honor of* Jessica McKean
Ken & Lindsey Meyersieck *in honor of* Madeline Meyersieck
Maureen & Bill Molmen *in honor of* Marjorie Molmen
June & Andy Monach *in honor of* David Monach
Zelle & Jack Myers *in honor of* Liza Myers
Richard & Mary Odenheimer *in honor of* Benjamin Odenheimer
Clayton Pang & Shihli Lu *in honor of* Michael Pang
Al Pfeiffer & Nora Cregan *in honor of* Cole Pfeiffer
Parker & Carol Phillips *in honor of* Beatrice Phillips
M.J. & Kathryn Pritchett *in honor of* Will Pritchett
Mingxin Qian & Tammy Chen *in honor of* Edan Qian
Ann & Dave Rapson *in honor of* Lilly Rapson
Curtis & Anita Rowe *in honor of* Natalie Rowe
Barbee Rubenstein *in honor of* Mallory Johnston
Bob & Lillian Rubenstein *in honor of* Mallory Johnston
George & Mary Rutherford *in honor of* Hugh Rutherford
Jerry & Mabel Sakoda *in honor of* Ainsley Lockhart
Shelby & Vicki Solomon *in honor of* Terry Solomon
Walter Stafford *in honor of* Campbell Stafford
Kathy Stafford *in honor of* Campbell Stafford
Mark & Susan Stutzman *in honor of* Molly Stutzman
Andrea & Paul Swenson *in honor of* Lucy Swenson
Dodie & Barry Tague *in honor of* Kelsey Lally
Malcolm & Alice Talcott *in honor of* Rosie Talcott
Kim Tan *in honor of* Brandon, Desmond, and Christopher Tan
Ronald Tufts & Lynsie Leung *in honor of* Lauren Tufts
Hector Vu & Lang Chau *in honor of* Linda Vu
Dave & Kathy Yam *in honor of* Eric Yam

The Endowment Fund was created to provide a reliable source of income to the school district to ensure educational excellence. Both the Piedmont Educational Foundation and the Piedmont Unified School District thank and applaud the Class of 2009.



A GREAT PUBLIC EDUCATION ISN'T FREE.

Through your parcel taxes and donations we have partially offset State budget cuts. This year there will still be a projected shortfall of \$1 million.

To increase efficiency, the Associated Parent Clubs of Piedmont and the Piedmont Educational Foundation are coordinating campaigns and combining administrative resources. Rest assured, all money raised will be allocated as in the past:

- Donations to the APCP will fund existing programs at your child(s) school site(s).
- Donations to PEF will help build the Endowment Fund or finance innovative K-12 grants through the Foundation Fund.

Support Piedmont children and join The Giving Campaign for Piedmont Schools. Thank you for your generous support!!

DON'T MISS OUT!

Make a donation in any amount by November 4th and you'll receive an "Investing in children. Building community." lawn sign!
Join your neighbors in proudly displaying your Piedmont pride!

APCP

THE ASSOCIATED PARENT CLUBS OF PIEDMONT

WE ARE PRIVILEGED TO LIVE IN A COMMUNITY WITH GREAT PUBLIC SCHOOLS, THANKS TO OUR:

- STUDENTS
- TEACHERS, SUPPORT STAFF AND ADMINISTRATORS
- SCHOOL BOARD
- SUPERINTENDENT
- FAMILIES AND COMMUNITY MEMBERS

WHO ARE PASSIONATE ABOUT PUBLIC EDUCATION.

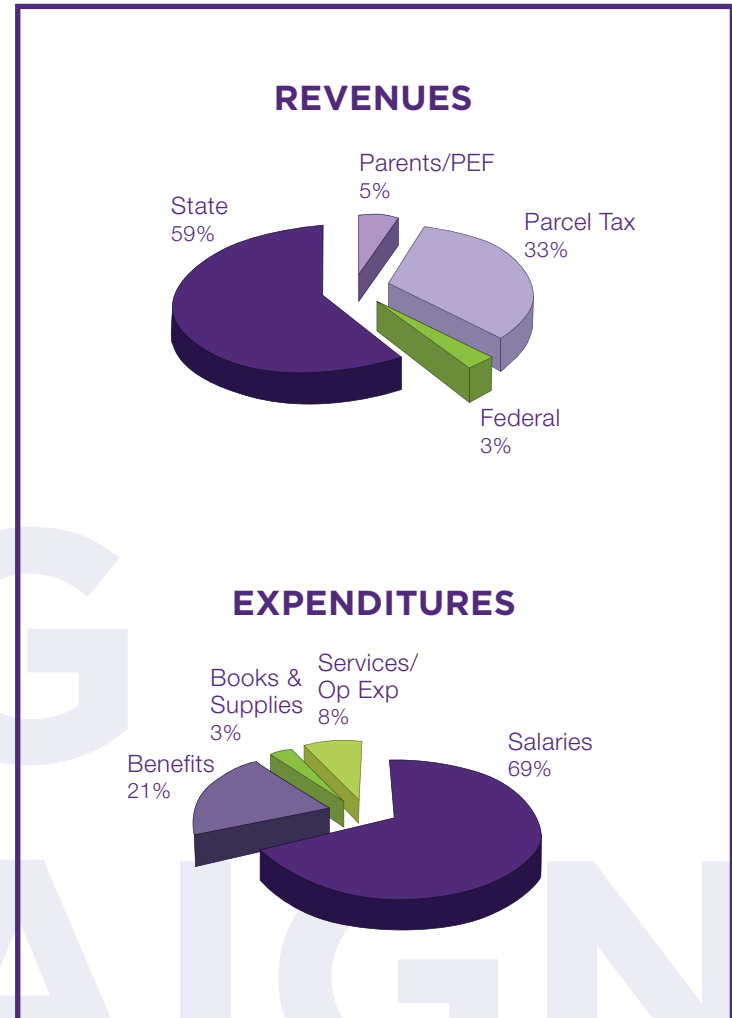
Our goal is to raise money to support programs at each of Piedmont schools **with 100% parent participation!**

Contributions go directly to help maintain programs such as classroom aides, science, music, art, math, computers and library activities. These program enrichments largely cover personnel costs, so generous support protects the heart of Piedmont's educational program – the teachers and support staff who spend time with our kids.

To help us achieve our goal, we are asking each family to donate \$1,200 or more, if you are able. However, your participation is more important than the amount given – so please donate whatever feels comfortable. No amount is too small to help bridge the spending gap!

AS ALWAYS, DONATIONS TO THE APCP PARENT CLUBS WILL BE USED TO FUND EXISTING PROGRAMS AT YOUR CHILD(S) SCHOOL SITE(S).

2009-10 PUSD ADOPTED BUDGET (TOTAL BUDGET = \$29 MILLION)



PEF

PIEDMONT EDUCATIONAL FOUNDATION



The Piedmont Educational Foundation (PEF) was founded in 1975 by a visionary group of community members who wanted to ensure the quality of our public schools. Our mission is to promote academic excellence, champion innovation and provide sustained financial support to our public schools.

WHEN MAKING GIFTS TO THE PEF, DONORS CAN CHOOSE TO:

1. Build the **Endowment Fund** for long term district support, or
2. Finance innovative K-12 grants through the **Foundation Fund**.

PEF BOARD 2009-2010 DIRECTORS

Briony Bax
Lupe Dryburgh
Lance Fong, President
Barbara Giuffre
Matthew Heafey
Brad Hebert
William Hosler
Douglas Ireland
Anne-Marie Lamarche
Robert McBain

Tim McCalmont
Conna McCarthy
Nancy McHugh
Gayle Sells
Dana Serleth
Amal Smith
Andrea Swenson
Ann Trutner
Jennifer Wilson
Robin Wu

Honorary Directors
Helen Breck
Ann Chandler
C. Lee Emerson
Cameron W. Wolfe, Jr.

ANNUAL SUMMARY

JULY 1, 2008 – JUNE 30, 2009

Reported on a cash basis

Beginning Balance: All Funds	\$3,788,554
Donation Income (See Chart)	623,256
Other Income	6,875
Net Investment Income	(554,108)
Funds Held for Joint Operating Committee *	(7,182)
Disbursements to Schools/Students (See Chart)	(509,279)
Other Disbursements	(43,498)

Ending Balance: All Funds **\$3,304,618**

Ending Fund Balance Includes:

Endowment Fund **	\$2,897,801
Restricted Funds	87,399
Funds Held for Joint Operating Committee*	11,125
Funds Reserved for Grants	133,765
General Fund	174,528

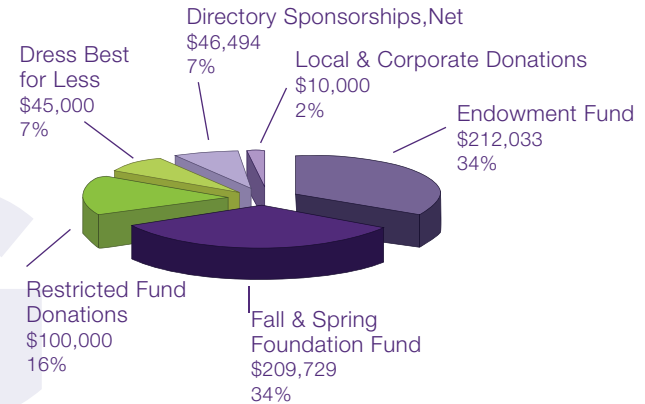
Total Ending Fund Balance **\$3,304,618**

* PEF and Parent Clubs Funds for Fundraising Coordinator and Office

** Excludes outstanding pledges

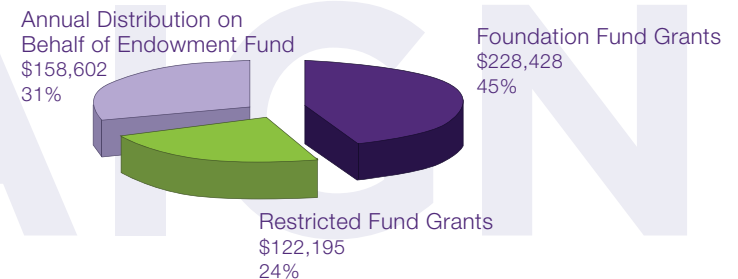
DONATION INCOME

TOTAL DONATION INCOME: \$623,256



DISBURSEMENTS TO SCHOOLS

TOTAL DISBURSEMENTS TO SCHOOLS: \$509,279



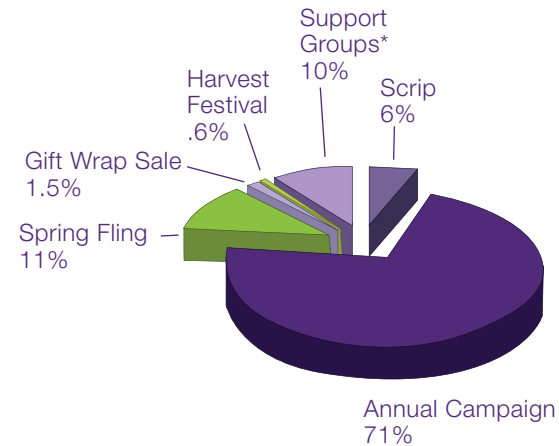
OUR PIEDMONT SCHOOLS

Students come first in the Piedmont schools. Educators work hard to provide all 2,529 Piedmont Unified School District students with a comprehensive, rigorous and relevant K-12 curriculum. Parent participation in classrooms, on fieldtrips, on boards and committees is very high. Residents demonstrate their commitment to education in a variety of ways, but most importantly, through a parcel tax contributing more than \$9 million yearly.

- In Piedmont, a team of over 360 highly experienced and dedicated teachers, support staff, and administrators work with students at six school sites: three elementary schools, one middle school, one traditional high school, and one alternative high school.
- The student population has become increasingly diverse and includes 20 percent who are Asian, 3 percent Hispanic, 3 percent African American, and 74 percent Caucasian.
- On California Standards Tests (CST) and STAR, PUSD is among the highest ranking unified school districts in the State, and over 95 percent of Piedmont Unified School District graduates pursue a college education.
- Piedmont High School is ranked among the top 100 public high schools in the nation (#64) by U.S. News & World Report.
- This year, in response to unprecedented revenue cuts from the state, the District will engage with teachers, administrators, support staff, employee groups, students, parents, and community members to develop locally defined principles and priorities. These principles and priorities will help guide budget development over the next several years.

APCP DONATIONS

TOGETHER, PIEDMONT PARENTS' GROUPS RAISED \$1,685,500 IN 2008/2009.



*PAINTS, CHIME, PRAISE, PASS, BOOSTERS, PADC, PAAC

ASSOCIATED PARENT CLUBS OF PIEDMONT (APCP) BOARD

Mary Ireland, President	Laura Katter
Carolyn Kenney (Aebi)	Joe Loduca
Billy Allen	Cory Smegal
Terri Burge	Ellen Wilson
Claudia Harrison	Andrea Swenson

The APCP Board is composed of the current president and either the outgoing or the incoming president from each of Piedmont's six parent clubs. The Board meets regularly to discuss issues of shared interest, including summer school operation, educational initiatives and district and parent club finances.